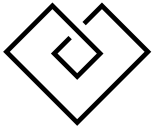
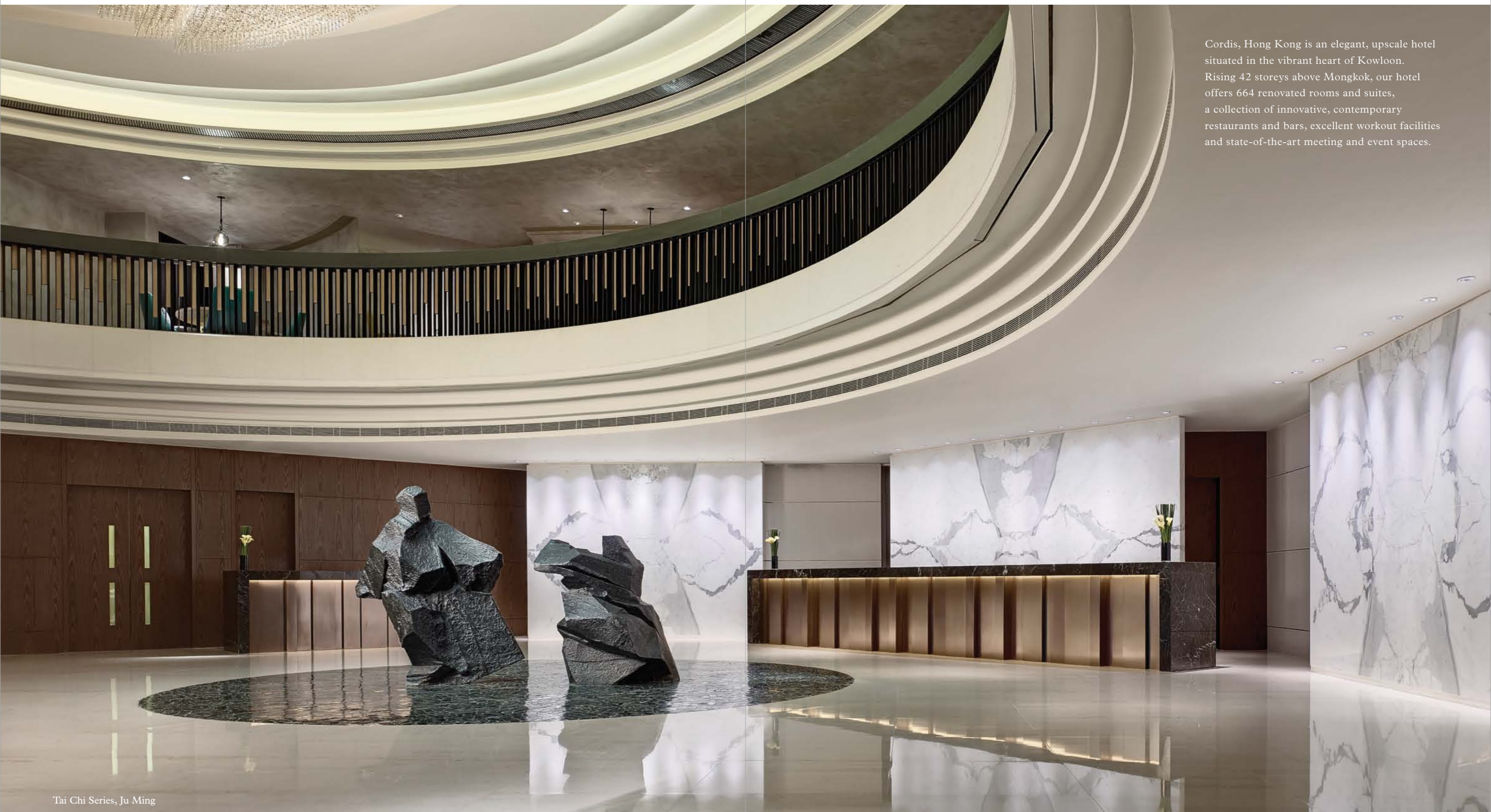


CORDIS

HONG KONG
AT LANGHAM PLACE



Cordis, Hong Kong is an elegant, upscale hotel situated in the vibrant heart of Kowloon. Rising 42 storeys above Mongkok, our hotel offers 664 renovated rooms and suites, a collection of innovative, contemporary restaurants and bars, excellent workout facilities and state-of-the-art meeting and event spaces.



Tai Chi Series, Ju Ming

METICULOUSLY TAILORED TO
YOUR WAY OF LIFE, CORDIS IS
 UTTERLY DEVOTED TO MAKING
 YOUR STAY JUST RIGHT.



Club Lounge

Our hotel is designed to fit your needs in every way. From spacious, naturally-lit rooms to specially designed family rooms and luxury suites, there are plenty of reasons to relax or be entertained. We have oversized bathrooms, large comfy beds, and a wide selection of pillows to promote a great night's sleep. State-of-the-art broadband, workstation facilities, complimentary handy smartphones, as well as floor-to-ceiling windows that offer great views of this fascinating city, make Cordis, Hong Kong, a modern choice for travellers.

KEY GUEST ROOM FEATURES

- Signature Dream Bed
- Pillow menu
- Complimentary handy smartphone
- Samsung® LED TV
- iHome™ Bluetooth MP3 Player
- Wired and wireless broadband internet
- In-room electronic safe with charging facilities
- International direct-dial telephone (IDD)
- USB charging station
- Work desk
- Iron and ironing board
- Refreshment centre
- Anti-fog glass mirror in bathroom
- Bathroom amenities

COMPLIMENTARY HANDY SMARTPHONES

Now available in all our rooms, our handy smartphones are available for your complimentary use throughout your stay with us.

You can stay connected and remain online with your business, family and friends whilst you breeze around the city, and enjoy:

- Unlimited local and international calls to Australia, China, Singapore, UK and USA
- Unlimited 3G internet connection
- Complimentary wifi hotspot & tethering

- A built-in Hong Kong City Guide of where to shop, eat, play and visit
- Video and camera capability
- Access to social media so you can share your journey with your friends and family, throughout your stay in the city
- Latest offers and happenings at the hotel

EXCLUSIVE CLUB BENEFITS

- Exclusive check-in and check-out at the Club Lounge
- Buffet breakfast, afternoon tea, evening cocktails and canapés
- Printer, fax and copier machine access
- Exceptional Club amenities
- Usage of iPads and Notebooks
- Complimentary pressing service of 3 items
- Complimentary use of pool and fitness centre
- Complimentary use of meeting room for 2 hours per stay
- Privileges at Chuan Spa
- Opening hours of Club Lounge: 6:30a.m. to 12:00 midnight



Club Lounge



SUPERIOR

- 280 ft² / 26m²
- 2 twin or 1 king bed
- Maximum number of guests: 2
- Features:
 - Marble bathroom with glass walls
 - Combined oversized bathtub and shower



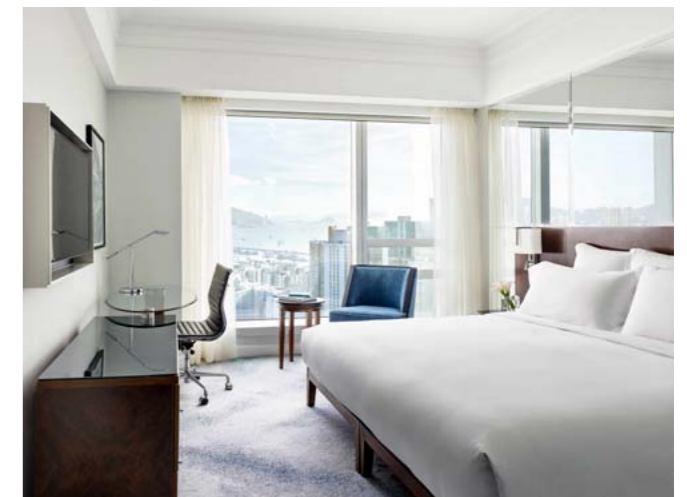
DELUXE

- 310 ft² / 29m²
- 2 twin or 1 king bed
- Maximum number of guests: 2
- Features:
 - Marble bathroom with glass walls
 - Oversized bathtub and separate rain shower



DELUXE PLUS & DELUXE HARBOUR VIEW

- 310 ft² / 29m²
- 2 twin or 1 king bed
- Maximum number of guests: 2
- Non-smoking rooms only
- Features:
 - Electronic blinds
 - Nespresso[®] coffee machine
 - Marble bathroom with glass walls
 - Oversized bathtub and separate rain shower
 - Choice of city or harbour view (Supplement applies)



FAMILY TRIO

- 400 ft² / 37m²
- 1 twin and 1 king bed or 3 single beds
- Maximum number of guests: 3
- Features:
 - Tailor-made goodies for children
 - Marble bathroom
 - Oversized bathtub and separate rain shower



FAMILY QUAD

- 550 ft² / 51m²
- 2 twin and 1 king bed
- Maximum number of guests: 4
- Features:
 - Kitchenette
 - Relaxing sofa with marble coffee table
 - Tailor-made goodies for children
 - Children's bathrobes and slippers
 - Marble bathroom
 - Oversized bathtub and separate rain shower



FAMILY TWO-BEDROOM

- 600 ft² / 56m²
- 4 twin beds or 2 king beds
- Maximum number of guests: 4
- Non-smoking rooms only
- Features:
 - Kitchenette with mini refreshment bar
 - 40-inch and 46-inch Samsung® LED TVs
 - Tailor-made goodies for children
 - Marble bathroom with glass walls
 - Oversized bathtub and separate rain shower



STUDIO

- 430 ft² / 40m²
- 1 king bed
- Maximum number of guests: 2
- Features:
 - Panoramic views
 - Kitchenette with microwave
 - Relaxing sofa with marble coffee table
 - Marble bathroom



All of the following rooms include Club Lounge access and privileges:

CLUB DELUXE

- 310 ft² / 29m²
- 2 twin or 1 king bed
- Maximum number of guests: 2
- Features:
 - Personalised check-in
 - Complimentary buffet breakfast
 - Located on the upper floors
 - Marble bathroom with glass walls
 - Oversized bathtub and separate rain shower



CLUB STUDIO

- 430 ft² / 40m²
- 1 king bed
- Maximum number of guests: 2
- Features:
 - Personalised check-in
 - Complimentary buffet breakfast
 - Kitchenette with microwave
 - Marble bathroom with glass walls
 - Oversized bathtub and separate rain shower



ONE-BEDROOM SUITE

- 600 ft² / 56m²
- 2 twin or 1 king bed
- Separate living room
- Maximum number of guests: 2
- Features:
 - Personalised check-in
 - Complimentary buffet breakfast
 - Kitchenette with Nespresso® coffee machine
 - 40-inch and 46-inch Samsung® LED TVs
 - Oversized bathtub and separate rain shower
 - Additional guest washroom



RESIDENCE SUITE

- 600 ft² / 56m²
- 1 king bed
- Separate living room
- Maximum number of guests: 2
- Features:
 - Personalised check-in
 - Complimentary buffet breakfast
 - Full kitchen with an oven and a breakfast bar
 - Nespresso® coffee machine
 - 40-inch and 46-inch Samsung® LED TVs
 - Oversized bathtub and separate rain shower



PRESIDENTIAL SUITE

- 1,200 ft² / 112m²
- 2-bedroom suite
- 2 twin or 2 king beds
- Maximum number of guests: 2
- Features:
 - Personalised check-in
 - Complimentary buffet breakfast
 - Fully-equipped kitchen with Nespresso® coffee machine
 - Dining area with a table that seats 6
 - Separate living room and study room
 - 40-inch and 55-inch Samsung® LED TVs
 - Washing machine
 - Guest bathroom with shower cubicle



CHAIRMAN SUITE

- 1,700 ft² / 158m²
- 2 twin or 1 king bed
- Separate living room with fully-stocked bar
- Study room
- Maximum number of guests: 2
- Features:
 - Personalised check-in
 - Complimentary buffet breakfast
 - Fully-equipped kitchen with Nespresso® coffee machine
 - Dining area with a table that seats 8
 - 55-inch Samsung® LED TV
 - Washing machine
 - Private Jacuzzi



CHUAN SUITE SERENITY & NIRVANA

- 310ft² / 29m² - 430ft² / 40m²
- 1 king bed
- Maximum number of guests: 2
- Features:
 - Personalised check-in
 - Complimentary buffet breakfast
 - Nespresso® coffee machine
 - 40-inch and 46-inch Samsung® LED TVs
 - Private Jacuzzi



CHUAN SUITE INFINITY

- 600ft² / 56m²
- 1 king bed
- Maximum number of guests: 2
- Features:
 - Personalised check-in
 - Complimentary buffet breakfast
 - Nespresso® coffee machine
 - 40-inch and 46-inch Samsung® LED TVs
 - Private steam room and Infinity Bath
 - Oversized infinity bathtub



NOTHING IS TOO MUCH TROUBLE,
NO DISTANCE TOO GREAT TO
TRAVEL, TO ENSURE OUR GUESTS
ARE **HAPPY, HEALTHY AND WELL.**

The Cordis, Hong Kong team are a considerate, caring group of people who are devoted to sharing their knowledge, time and enthusiasm with guests. Nothing is too much trouble, no distance too great to travel, to ensure our guests are happy, healthy and well.

GUEST SERVICES & FACILITIES

- Foreign exchange
- Limousine service
- 24-hour Duty Manager
- Multi-lingual colleagues
- Same day dry clean / laundry service
- Baby-sitting service
- Shoe shine service
- Business Centre
- Concierge and mailing services
- Valet parking
- Two non-smoking floors
- Complimentary use of DVD players
- 24 hour room service
- Restaurants and bars
- Spa and Health Club
- Outdoor roof-top heated lap pool
- Complimentary Walking Tours and Art Tour



CORDIS IS DEVOTED TO HELPING OUR INTREPID GUESTS RECOVER, REVITALISE AND **RADIATE HAPPINESS.**



Chuan Spa

PLUNGE - SWIMMING POOL

Perched on the top of the hotel at Level 42 is our 20 metre, outdoor heated swimming pool. Chill out to the grooves of underwater music, relax on the poolside deck chairs or rest in one of our cocoon cabanas for drinks or massages.

PULSE - FITNESS STUDIO

Located on Level 41, our modern extended gymnasium is equipped with a range of the latest in fitness equipments. Open 24 hours daily, there are open workout classes and professional fitness instruction, serving as a perfect space for those who want to stay fit.

CHUAN SPA, HONG KONG

Incorporating 9 luxurious treatment rooms and 2 soothing relaxation rooms, Chuan Spa offers over 60 beauty & health treatments. Based on the principles and techniques of Traditional Chinese Medicine (TCM), treatments are guided by the TCM pillars of Wu Xing (the Five Elements), Yin & Yang and Jing Luo (the Meridian System).

Equipped with sauna, steam, Jacuzzi and Oriental hot tub, you can also enjoy breathtaking views of Kowloon while having reflexology therapy. Other services include body, hand and foot massages, hydrotherapy, body scrubs and wraps, facials, manicures and pedicures.



Plunge



WE ARE DEVOTED TO BRINGING
PEOPLE TOGETHER TO ENJOY
THE BEST OF TIMES, NO MATTER
WHAT THE OCCASION IS.

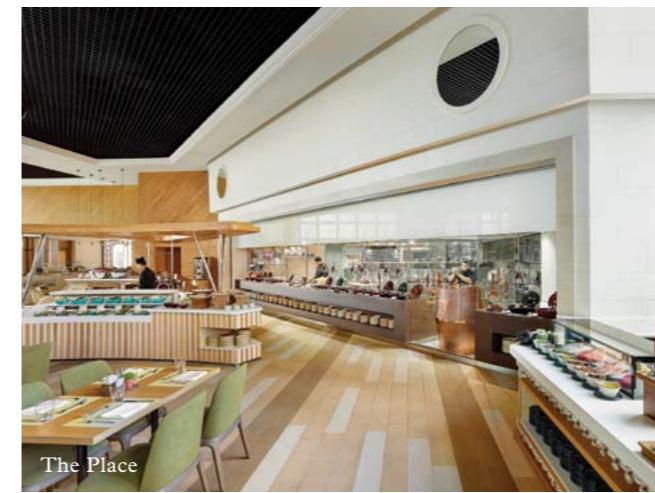


Alibi - Wine Dine Be Social

ALIBI - WINE DINE BE SOCIAL

The 5,500 sq ft Alibi is an urban chic restaurant and bar, it's a place to escape, wine, dine and be social. Homegrown talent, a wine wall, award-winning mixology and creative cuisine make up the spacious and vibrant venue in hues of teal, tweed and copper with steel grey and lime accents.

—
Open from 10:00am to 1:00am (Monday to Thursday)
and 10:00am to 2:00am (Friday, Saturday, Sunday and
public holiday eves)
Level 5 / T (852) 3552 3232



The Place

THE PLACE

With an open and airy feel, The Place is an all day dining restaurant that offers an indulgent journey at one of the city's most popular buffet restaurants, serving you breakfast, lunch, afternoon tea, dinner and late night supper buffets, alongside a refreshing all-day à la carte menu.

—
Open daily from 6:30am to 12:30am
Level L / T (852) 3552 3200



The Backyard

THE BACKYARD

Set amongst sweet-scented mango trees, The Backyard is a 6,000 square foot outdoor paradise, with a waterfall and water feature that streams throughout the space with chill-out music in the background. Champagne flows freely, cocktails are available by the glass – or jug, and beer comes in over 20 different local and international varieties.

Business gatherings are more pleasant in The Backyard. The outdoor deck is perfect for cocktail parties or after-work drinks with the team.

—
Open daily from 5:00pm to 1:00am
Level L / T (852) 3552 3250

FORGET THE DAY'S STRESSES AND
MIX IT UP AT OUR CONTEMPORARY
 RESTAURANTS AND BARS.



Two-Michelin-starred Ming Court

MING COURT

Two-Michelin-starred Ming Court unlocks 21st century Cantonese cuisine, at its finest. Profiling sophisticated, contemporary cuisine crafted by Ming Court's culinary talents, Ming Court's innovative, authentic flavours offer an elevated dining experience.

The restaurant features its own Ming Cellar with over 400 wines. The extensive selection of wines from over 100 regions enriches and complements Ming Court's authentic Cantonese cuisine, creating a dynamic Cantonese food and wine pairing experience for guests.

Groups of 6 to 144 may be entertained in any of our five modern, private dining rooms.

—
 Open daily from 11:00am to 2:30pm
 and 6:00pm to 10:30pm
 Level 6 / T (852) 3552 3300

MAKE BUSINESS A PLEASURE.
WORK WELL IN WELL-APPOINTED
ENVIRONMENTS.

BANQUET & FUNCTION FACILITIES

We offer an extensive range of conference and banqueting options to meet all occasions. Five spectacular venues include the 7-metre ceiling function room, The Ballroom, our signature roof-top Star Room with a spectacular view over Hong Kong, Shanghai Room with beautiful daylight, cosy Shantung Room, and Ming Court's private dining rooms.

We offer attractive tailor-made packages and the latest audio-visual equipment, including an engaging and visually impactful hi-tech, high-definition supersized 6.7 by 3.4-metre LED screen wall in The Ballroom.

To cater to our guests' needs, our business centre is open all day, offering a range of meeting facilities including a boardroom, video conferencing facilities, laptop computers and projectors.

Location

Star Room	Level 42
Shanghai Room	Level 8
Shantung Room	Level 8
The Ballroom	Level 7
Ming Court Private Rooms	Level 6

—
 For reservations or enquiries,
 please contact our events specialists
 T (852) 3552 3366



STAR ROOM

Soaring above the city streets, our Star Room on Level 42 sits higher than any function room in Kowloon. From up here, you can enjoy panoramic views of Hong Kong. Watch the sunrise during breakfast meetings or celebrate after dark with evening cocktails. It's one of our most popular event spaces. Seats up to 240 and standing receptions up to 300.

THE BALLROOM

Enter a space where style and technology intertwine. With a ceiling height of 7 metres, our Ballroom is bright and spacious. Crystal chandeliers, Asian-inspired tapestries, and a supersized LED screen (6.7 x 3.4 metres) are ideal for annual galas and business conferences. Seats up to 480 and standing receptions up to 600.

SHANGHAI ROOM

Stay productive in our sunlit Shanghai Room. Enjoy the flexibility to host meetings, follow-on lunches and dinners – this space can be divided into two when necessary.

SHANTUNG ROOM

If you're looking for a place to host a smaller business meeting, our Shantung Room is just right for that. With a unique fan-shape, this space is perfect for intimate meetings or as a break out room.

MING COURT

Enjoy some food for thought at our Two-Michelin-starred restaurant, Ming Court. Entertain groups from 6 to 144 in any of our five modern, private dining rooms.

THE BACKYARD

Business gatherings are more pleasant under the sweet scented mango trees of The Backyard. This 557 square metre outdoor deck is perfect for cocktail parties or after-work drinks with the team.

THEMED COFFEE BREAKS

Cordis, Hong Kong surprises meeting guests with innovative themed coffee breaks and elevated culinary concepts.

I Love Mongkok

Fall in love with Mongkok for its delicious dynamism. I Love Mongkok boosts your spirit with authentic Mongkok street side flavours in five-star contemporary surrounds.

Edible Art

Savour our chef's artistic culinary creations while immersing yourselves in the world of contemporary art. Wave your paintbrush on a sheet of sketch paper to stimulate your creativity!

Vintage Hong Kong

We bring to life Hong Kong's old-time favourites, perfect for those wanting to experience the old Hong Kong without leaving the hotel. Delight in a variety of traditional Cantonese dim sum along with delicious herbal teas... sure to inspire your thoughts.

Green Chic

Being an eco-conscious hotel in Hong Kong, we embrace green chic ideas. Enjoy an eco-friendly coffee break and our homemade organic goodies.

The Secret Sweet Garden

Love is in the air. Romance your guests with edible flowers, honey crunch cakes, delicate macrons, éclairs, truffles, and chocolate fountains. Add some charming flowerpots, mossy pebbles, and white picket fences decorated with butterflies and birdcages — and you're guaranteed to enchant.

Wellness

Elevating the holistic experience for the health-savvy guest, the city's adored Two-Michelin-starred Cantonese restaurant, Ming Court, collaborates with Chuan Spa, Hong Kong to launch the new Wellness themed break, featuring healthy delicacies using premium Chinese herbs and fine ingredients that stay true to Chuan Spa's 'Wu Xing' (Five Elements) and TCM-focused philosophy including element teas, ginger pudding, lotus seed soup and green bean rice dumplings.



Star Room



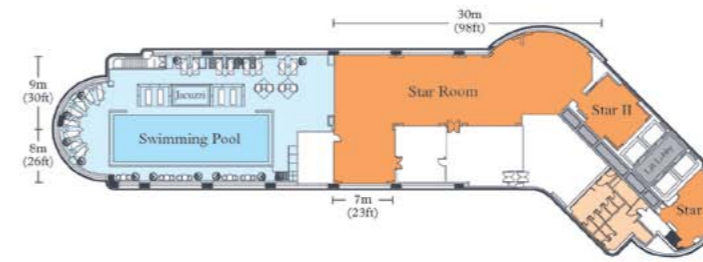
Shanghai Room

SEATING CAPACITIES FOR MEETING SPACES

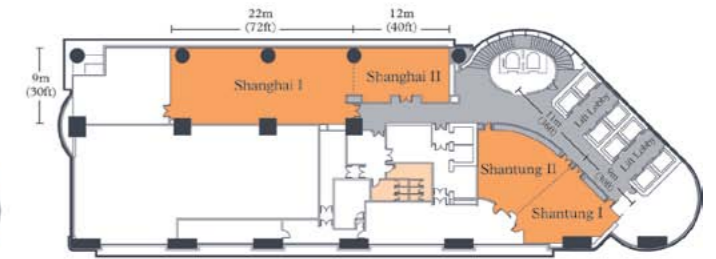
Venue	Level	Floor Size sq m (sq ft)	Ceiling m (ft)	Capacity					
				Banquet	Theatre	Classroom	U shaped	Boardroom	Reception
Star Room	42	320 (3,400)	2.7 (9)	240	200	120	49	60	300
• Star I	42	38 (400)	2.7 (9)	10	20	-	8	12	20
• Star II	42	45 (480)	2.7 (9)	24	36	18	14	16	30
Shanghai Room	8	290 (3,000)	2.7 (9)	180	200	102	49	60	200
• Shanghai I	8	210 (2,200)	2.7 (9)	120	130	84	49	60	150
• Shanghai II	8	80 (850)	2.7 (9)	48	50	30	22	24	50
Shantung Room	8	165 (1,750)	2.7 (9)	120	130	66	36	46	150
• Shantung I	8	74 (780)	2.7 (9)	36	45	30	16	18	40
• Shantung II	8	91 (960)	2.7 (9)	60	60	36	20	24	60
The Ballroom	7	626 (6,600)	7 (23)	480	600	300	-	-	600
• Ballroom I	7	170 (1,800)	7 (23)	96	108	72	34	46	150
• Ballroom II	7	190 (2,000)	7 (23)	120	153	96	44	56	200
• Ballroom I & II	7	360 (3,800)	7 (23)	252	400	204	76	90	400
• Ballroom III	7	168 (1,780)	3 (10)	96	96	63	40	46	120
• Ballroom IV	7	98 (1,000)	3 (10)	-	-	-	-	-	-
Ming Court									
• Hao	6	30 (318)	2.5 (9.5)	12	18	-	-	6	-
• Man	6	54 (581)	2.5 (9.5)	36	40	18	17	20	-
• Lang	6	62 (671)	2.5 (9.5)	16	-	-	-	-	-
• Ying	6	30 (318)	2.5 (9.5)	12	20	15	-	12	-
• Yuan	6	44 (477)	2.5 (9.5)	24	30	18	19	20	-
• Ying and Yuan	6	74 (794)	2.5 (9.5)	48	42	21	19	22	-
• Ming Moon	6	230 (2,476)	2.5 (9.5)	144	80	54	27	26	-
Main Dining Room (Includes Ying and Yuan)									
The Backyard	L	322 (3,465)	NA	156	-	-	-	-	200
• Upper deck	L	134 (1,440)	NA	60	-	-	-	-	80
• Lower deck	L	188 (2,023)	NA	96	-	-	-	-	120

FLOOR PLANS

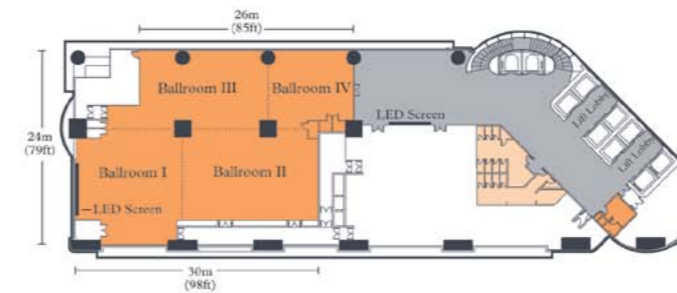
Star Room (Level 42)



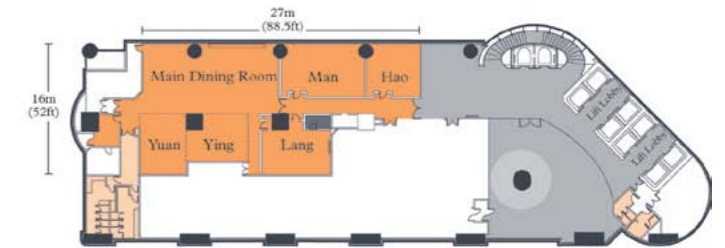
Shanghai & Shantung Rooms (Level 8)



The Ballroom (Level 7)



Two-Michelin-starred Ming Court (Level 6)



The Backyard (Level L)



ONE EARTH. ONE HOME.
ONE OBLIGATION.
CORDIS IS DEVOTED TO
SUSTAINABLE COMMUNITIES.



The Backyard

At Cordis, Hong Kong, we love, protect and nurture our people and environment in every way possible. We actively participate in leading third party certification, i.e. ISO 14001 and EarthCheck, to benchmark our effort put into our environment. We have been certified by ISO 14001 since 2008 and have achieved the Gold Award by EarthCheck.

ENERGY IN OUR PUBLIC AREAS

- Energy efficient lighting
- Movement detectors for lighting
- Energy efficient heating and cooling systems
- Heat recovery and cogeneration equipment
- Energy efficient vehicles
- Low/dual flush toilets
- Low flow tap/shower fittings
- Auto-detect/waterless urinals
- Used items donation

CONNECT CONFERENCES

Launched across select properties under Langham Hospitality Group, CONNECT Conferences offers planners the option to select sustainable meeting solutions which offset the environmental and social impact from their event.

Flexible options, from simply serving filtered water rather than bottled to creating banquet menus, which use locally grown organic ingredients, allow planners to create sustainable events tailored to their budget and preferences.

DINING AND BANQUETING

- Alternative to plastic bottled water
- Recycled/Eco-labelled paper stationery
- Sustainable beverage options
- Recycled paper/metal/plastics/glass/cooking oil
- Food donation

GUEST ROOMS

- Guest of the Earth programme (reuse linen and towels)
- Energy efficient lighting
- Energy efficient heating and cooling systems
- Low/dual flush toilets
- Low flow tap/shower fittings
- Recycling services
- Recycled/Eco-labelled paper stationery

CORDIS, HONG KONG

EXPLORE, FEEL THE LOCAL BEAT THAT
PULSES AROUND OUR VIBRANT CITY
AND FIND OUT WHAT MAKES
HONG KONG SO SPECIAL.

OUR CITY



Cordis, Hong Kong embraces our neighbourhood and we love to discover hidden gems with our guests. Every guest can experience the real Hong Kong with our complimentary tours.

MONGKOK MARKET TOUR (DAILY)

Experience all the sights and sounds of Mongkok with our exclusive daily market tour departing at 6:00pm. The tour is complimentary for all guests and will be conducted in English, Cantonese and Mandarin. The tour takes approximately 35 minutes.

CULTURE TOUR

(TUESDAYS, THURSDAYS, SATURDAYS)

The Culture Tour will unveil the cultural and historical facets of this bustling destination. Strolling along Shanghai Street towards Yau Ma Tei, you will experience the unique cultural legacy of real Hong Kong, ranging from stores with traditional Chinese wedding accessories stores and wooden antique furniture, to Buddhist relics. The tour departs from the hotel at 11:00am, Tuesdays, Thursdays and Saturdays, excluding public holidays. The tour is complimentary and can be conducted in English, Cantonese and Mandarin. The tour takes approximately 60 minutes.

DISCOVERY TOUR

(MONDAYS, WEDNESDAYS, FRIDAYS)

Discover Mongkok's hidden beauty by joining the 90-minute Discovery Tour, taking you to the nearby Goldfish and Flower Markets, Bird Garden and electronic goods shops. You will be able to taste Mongkok's famous street food too – what an adventure! The tour departs from the hotel at 3:00pm, Mondays, Wednesdays and Fridays, excluding public holidays. The tour is complimentary and can be conducted in English, Cantonese and Mandarin. The tour takes approximately 90 minutes.

Please book our tours with the Concierge or by dialling '0'. Please assemble at our Concierge counter in the Lobby on Level L 10 minutes before the departure time.

ART TOUR

Learn more about our inspiring collection of contemporary Chinese art. Being described as an 'Art Gallery Masquerading as a Hotel' by TIME Magazine, we own more than 1,500 pieces of contemporary Chinese art estimated to be valued over HK\$35 million. Have a tour inside the hotel and explore some of our iconic pieces. Guests may contact our Concierge team for a petite box-set of art cards with image prints and written explanations in both English and Traditional Chinese.



EXPLORE HONG KONG, WHERE ALL CULTURES MEET

Ocean Park

Ocean Park is one of Hong Kong's favourite attractions and features rides, exhibits and conservation facilities.

The park is located on the southern side of Hong Kong island, covering more than 870,000 square metres. The Waterfront and The Summit areas are connected by Cable Car, Ocean Express funicular train and the second longest outdoor escalator in the world. Highlights at Ocean Park include the Giant Panda Adventure and Polar Adventure.

Giant Buddha / Po Lin Monastery

No trip to Hong Kong is complete without a visit to the world's tallest, outdoor, seated bronze Buddha which sits serenely atop the Ngong Ping plateau, amid the spectacular mountain scenery of Lantau Island. The majestic figure of the seated Buddha is 34 metres high, was cast in China and took over 10 years to complete. Weighing 250 tonnes, it was unveiled in 1993.

The Peak

Looking down from The Peak you'll be amazed by the spectacular view of the surrounding city skyline, the world-famous Victoria Harbour and Kowloon, towering skyscrapers and peaceful green hillsides.

Getting there is an unforgettable trip. Pulled by steel cables, the tram climbs 373 metres (about 1,200 feet). It's so steep that the buildings you pass look like they're leaning at a 45° angle! Whether you're going up or coming down, you'll love this trip.

Chi Lin Nunnery

One of the most beautiful and remarkable temples made of elegant wood in the style of the Tang dynasty, the Chi Lin Nunnery provides a peaceful stroll away from the hustle and bustle of the city.

Mai Po Nature Reserve

Located on the northwestern corner of Hong Kong, Mai Po Nature Reserve is among Asia's finest locations for wetland biodiversity. Around 90,000 migratory birds take refuge in the marshes and mudflats of the internationally acclaimed Mai Po Nature Reserve every winter, offering an amazing spectacle of diverse wildlife. Tours are available to explore the boardwalk and natural habitats of wildlife.

The West Kowloon Waterfront Promenade

Occupying an area of 33,600 square metres, the West Kowloon Waterfront Promenade is situated at the southern tip of West Kowloon with its entrance at the junction of Austin Road West and Nga Cheung Road, Tsim Sha Tsui, Kowloon.

Hong Kong Disneyland

Celebrating a forever-young sense of adventure, Hong Kong Disneyland consists of seven themed lands similar to other Disneyland parks: Grizzly Gulch, Mystic Point, Toy Story Land, Fantasyland, Tomorrowland, Adventureland and Main Street, U.S.A.

CITIES IN SOUTHERN CHINA AND TAIWAN

- 1 Hong Kong
- 2 Macau
- 3 Beijing
- 4 Shanghai
- 5 Guangzhou
- 6 Taipei



HONG KONG ATTRACTIONS

HK Side

- 1 The Peak
- 2 Aberdeen
- 3 Lan Kwai Fong
- 4 Hong Kong Macau Ferry Terminal (Sheung Wan)
- 5 Ocean Park

Kowloon Side

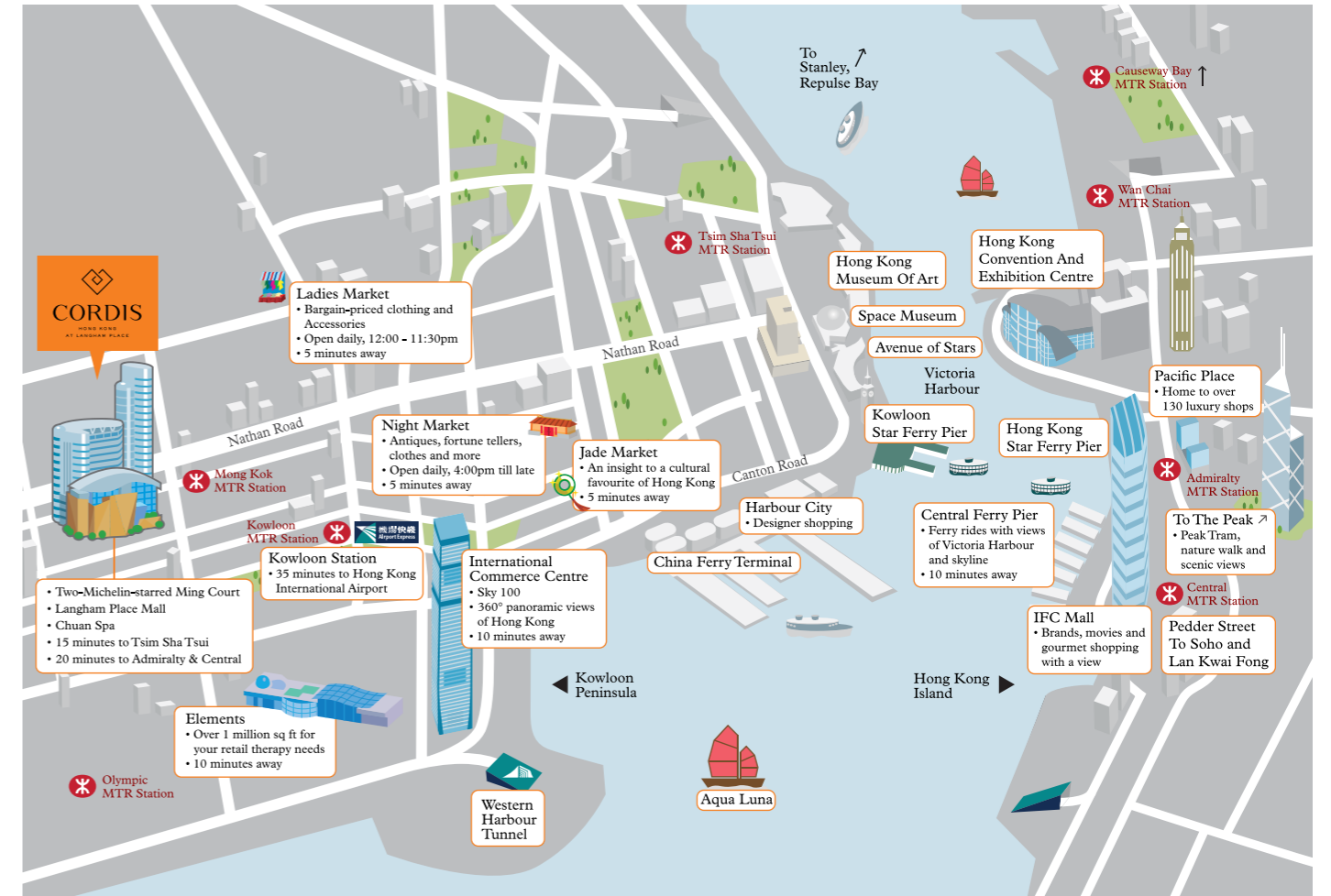
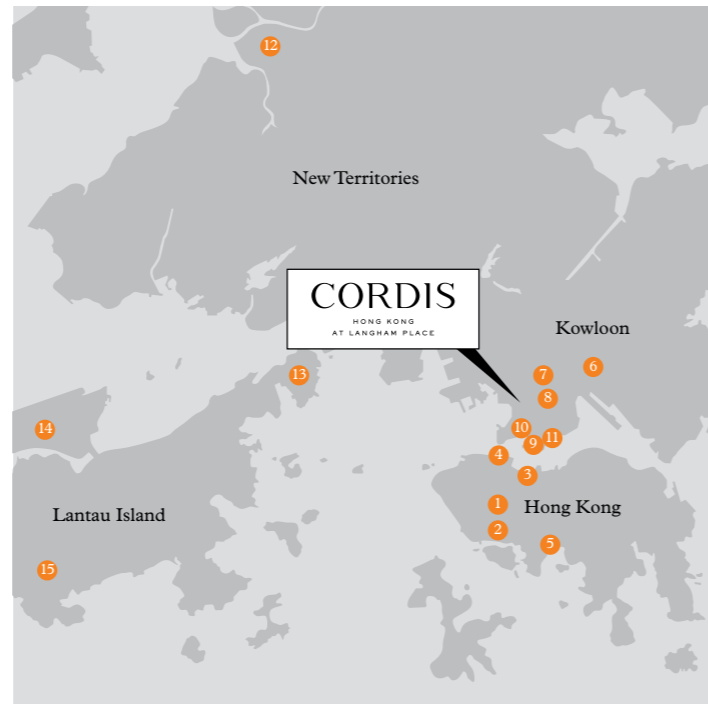
- 6 Chi Lin Nunnery
- 7 Ladies' Market
- 8 Temple Street Night Market
- 9 Hong Kong China Ferry Terminal (Tsim Sha Tsui)
- 10 West Kowloon Waterfront Promenade
- 11 Hong Kong Cultural Centre

New Territories

- 12 Mai Po Nature reserve

Lantau Island

- 13 Hong Kong Disneyland
- 14 Hong Kong International Airport
- 15 Giant Buddha / Po Lin Monastery



HOTEL ADDRESS

Cordis, Hong Kong
555 Shanghai Street, Mongkok,
Kowloon, Hong Kong

T +852 3552 3388
F +852 3552 3322
E cdhkg.info@cordishotels.com
cordishotels.com/hongkong

TRANSPORTATION

We offer direct underground access to Mongkok Mass Transit Railway Station (MTR), and are 15 minutes drive from the Star Ferry and 35 to 40 minutes drive from Hong Kong International Airport. Limousine service is available for hotel guests.

RESERVATIONS

T +852 3552 3552
F +852 3552 3558
E cdhkg.resv@cordishotels.com

ACCESS CODES OF WORLDHOTELS

AMADEUS	LO HKGLAN
GALILEO	LO 64007
SABRE	LO 60675
WORLDSPAN	LO HKGLA



 @cordishk

langhamhospitalitygroup.com

Kindly note the above information was accurate at the time of printing;
Cordis, Hong Kong reserves the right to update the content when necessary.



CORDIS

LANGHAM HOSPITALITY GROUP